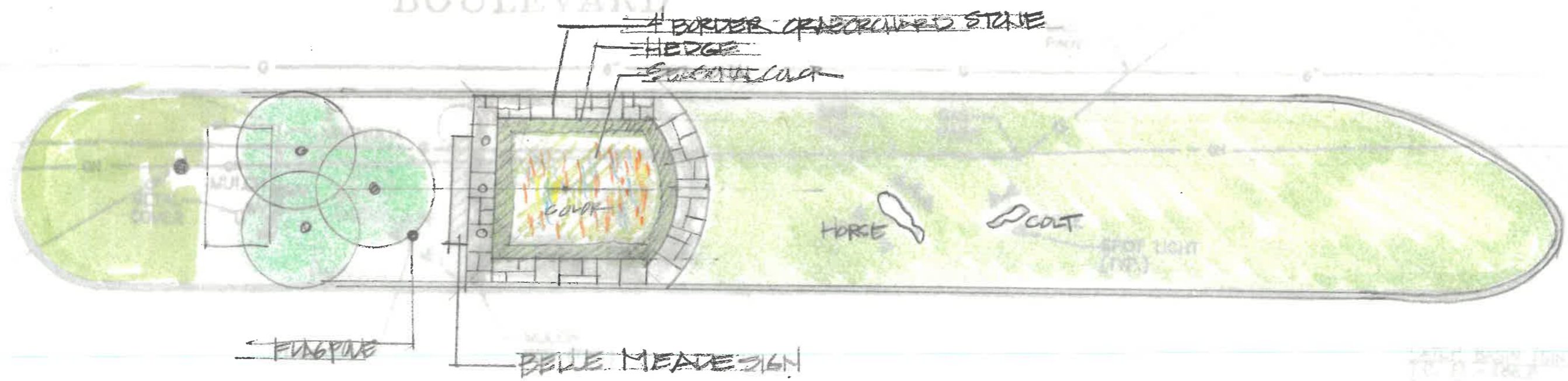


WATER INLET (SIN)
T.C. 11-18-67
BY E.L. 11-18-67

HARDING

BOULEVARD



ISLAND # 1
 1/8" = 1/10"



ISLAND #1

BENCHMARK #7
IRON ROD SET
ELEV.: 528.56

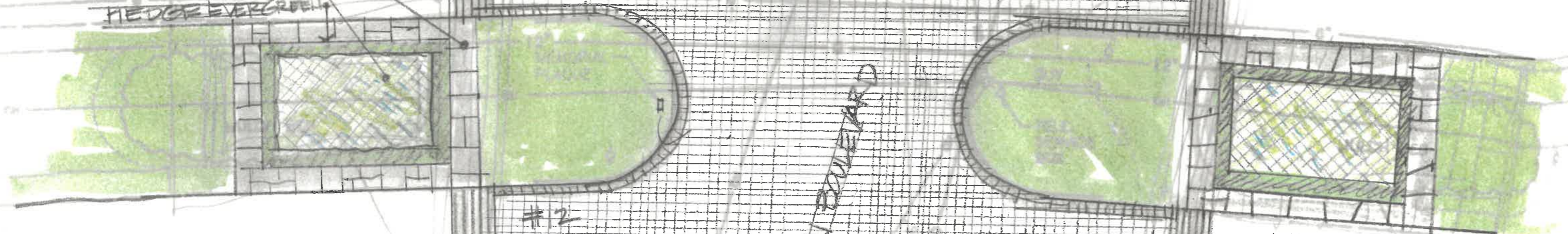
JACKSON BOULEVARD

MEADE

BEJE MEADE BOULEVARD

BOULEVARD

CORBEL STONE
SIDE DRIVE
SIGN W/COAT
HEDGE EVERGREEN



#2

#11

DCM PINK

ISLAND #11 & #12

JACKSON BOULEVARD

ELLE

BELOW BLK
EDGE

STONE BORDER

COLOR

BELLE MEADE BLVD

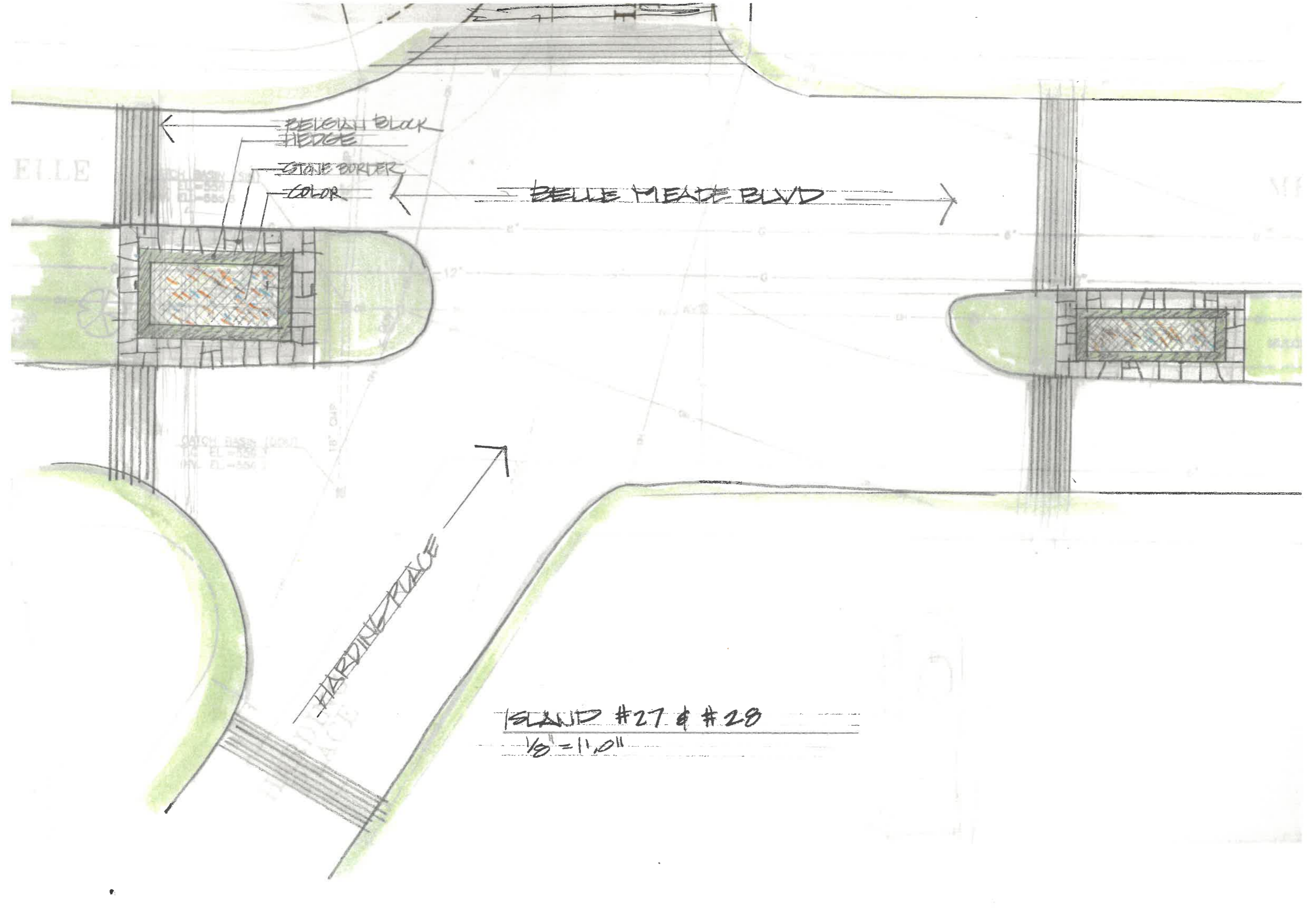
CATCH BASIN (100)
12" EL = 100.0
18" EL = 100.0

18" CHIP

HARDING PLACE

ISLAND #27 & #28

1/8" = 1'-0"



REMOVE 2 FEARS

#01

WIDE STAIR BORDER

HEDGE

DESIGNAL COUR REMOVE FEAR

BELGIAN BLOCK

BELLE MEDE BLVD.

BOULEVARD

MEMORIAL
PLAQUE

BELGIAN BLOCK

3 CM

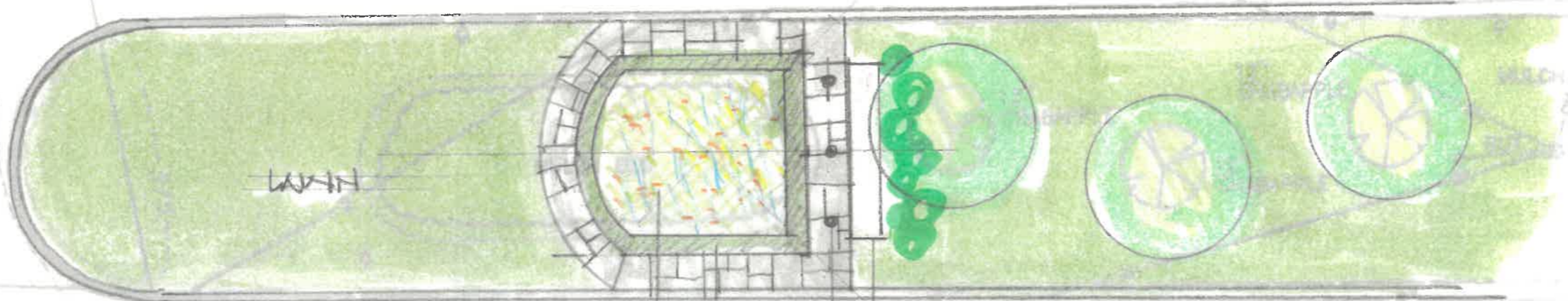
ISLAND # 34

CHICKERING ROAD

WICKERING ROAD

MANHOLE
11' EL - 54.2
10' EL - 51.2

2-3



CATCH BASIN (SIN)
 T. 1 - 1.570.0
 W. 1 - 1.570.2

CATCH BASIN
 T. 1 - 1.570.0
 W. 1 - 1.570.2

CATCH BASIN (SIN)
 T. 1 - 1.570.0
 W. 1 - 1.570.2

- CITY OF BELLEMEADE (NEWS SIGN)
- LIGHTS UP (WELL)
- HEDGE
- SEXUAL COOP

ISLAND #38

1/8" = 1'-0"

114 E - 587



4/11/2014

WRONG WAY

Older Bois Meade

S1611

Hedge

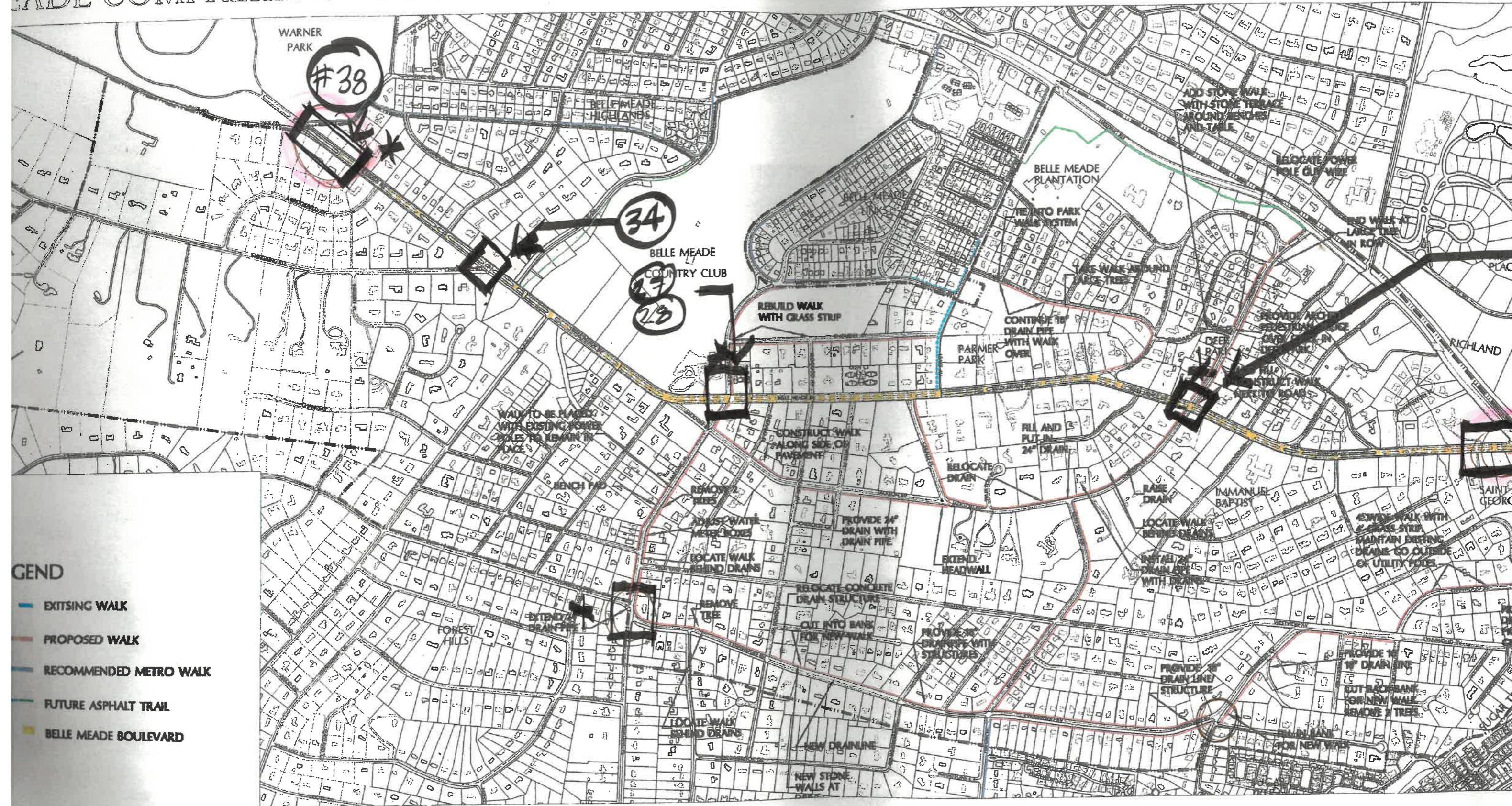
38

ISLAND #38

LEFT LANE FOR PASSING AND TURNING ONLY

NO PARKING

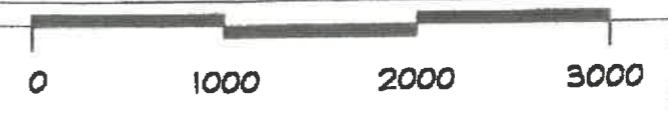
MADE COMPREHENSIVE SIDEWALK PLAN



- LEGEND**
- EXISTING WALK
 - PROPOSED WALK
 - RECOMMENDED METRO WALK
 - FUTURE ASPHALT TRAIL
 - BELLE MEADE BOULEVARD

SEE DETAIL PLANS FOR BELLE MEADE BOULEVARD

ISLAND DIAGRAM
N.T.S.



BARGE CAUTHEN & ASSOCIATES, INC.
PLANNERS • ARCHITECTS

10 WHITE SPRUCE ROAD SUITE 210
NASHVILLE, TENNESSEE 37203-1487
(615) 256-9515 (PHONE) (615) 256-4757 (FAX)