

Belle Meade Boulevard Pedestrian Safety Improvement Project

January 16, 2025



Exploring Safety on Belle Meade Boulevard

The City of Belle Meade completed the Belle Meade Together Master Plan in October 2021, which focused on 5 major elements:

Safe Spaces for People

Security Camera Program

Traffic Calming and Management

Representing Belle Meade's Brand

Managing Stormwater.

Opportunities for Input:

**Kickoff started in late 2020
with 13 meetings**

**Spring 2021: Plan
Two Virtual Town Hall**

Four Listening Sessions

A dedicated project website

On-site Events:

Meet the Team Day

Election Day

St. George's Farmers Market

Walk the Boulevard

City Hall Open House

Youtube Project Update

Feedback Survey



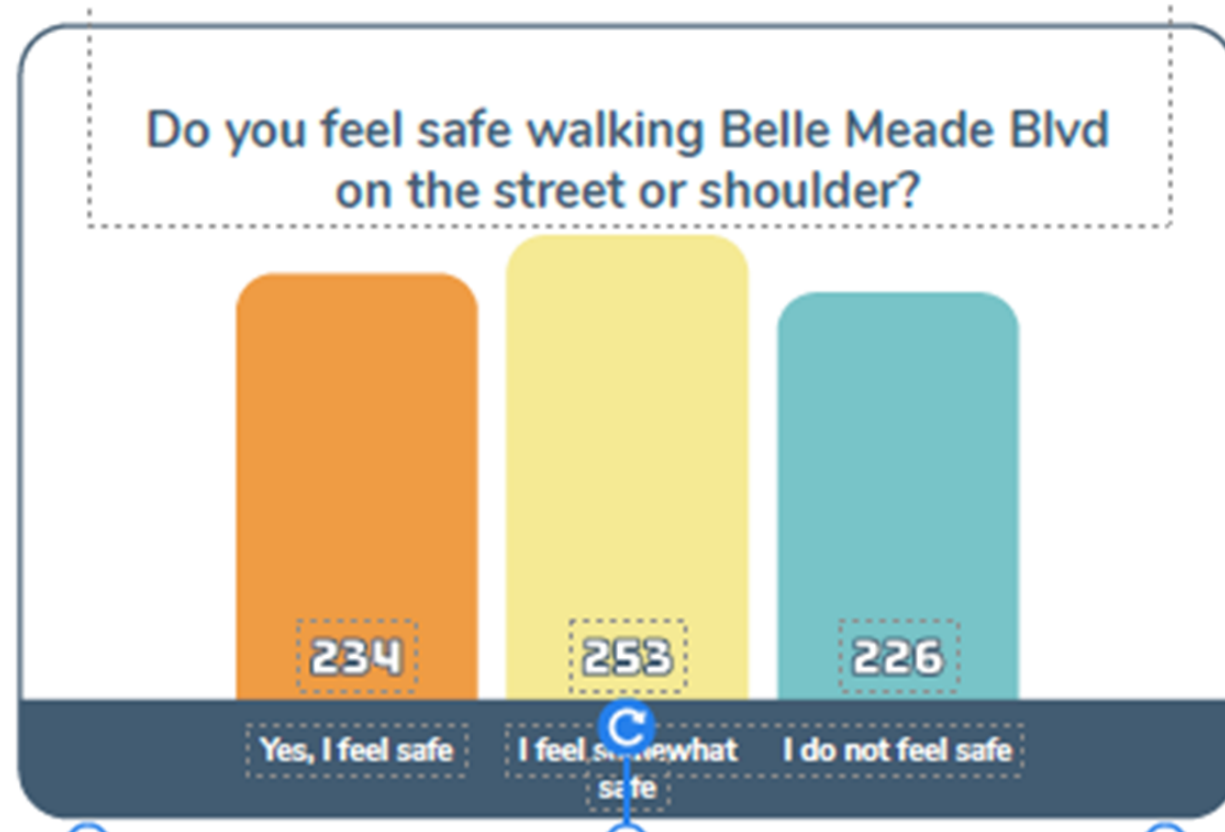
Walk the Boulevard

Civic Design Center Findings:

- The current streetscape only allows for a small space on the inside left lane for people to **walk/bike single file**.
- This makes it increasingly **unsafe for two people to walk side by side or to travel with a stroller/pets**.
- An indirect effect of prioritizing pedestrian safety is to **increase vehicle safety by requiring more drivers to use the road as designed**.
- **This is a public safety problem for the City.**

Community Survey Results:

- The first major finding was that **about two thirds of respondents indicated that pedestrian safety could be enhanced** on the Boulevard.



Many options were considered:

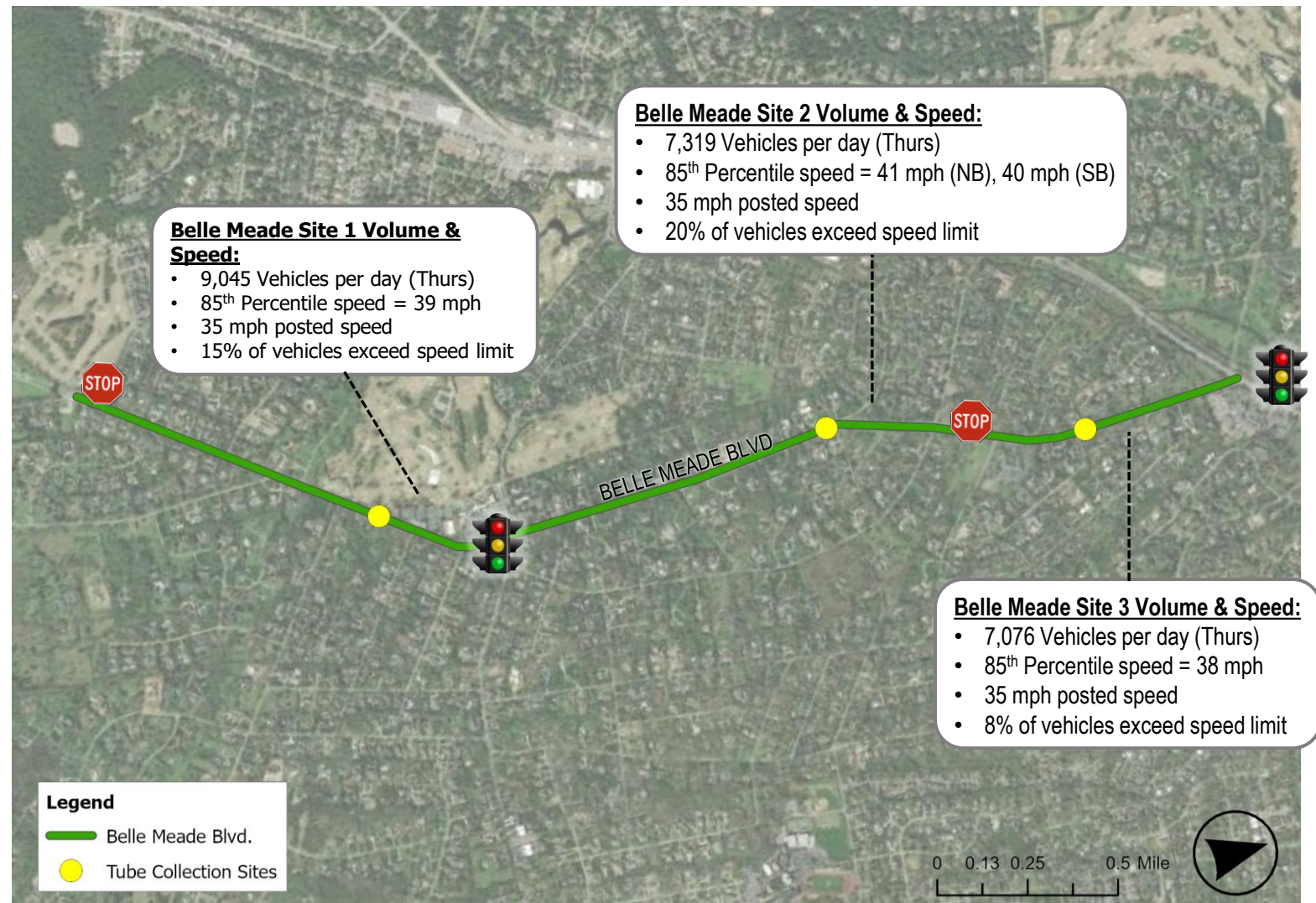
- Go to single driving lanes
- Construct sidewalks on each side of Belle Meade Blvd
- Create pedestrian pathway down middle of median
- Prohibit pedestrians/walking on the Boulevard

Our preferred option:

Safer and limited design change that preserves the character of Belle Meade

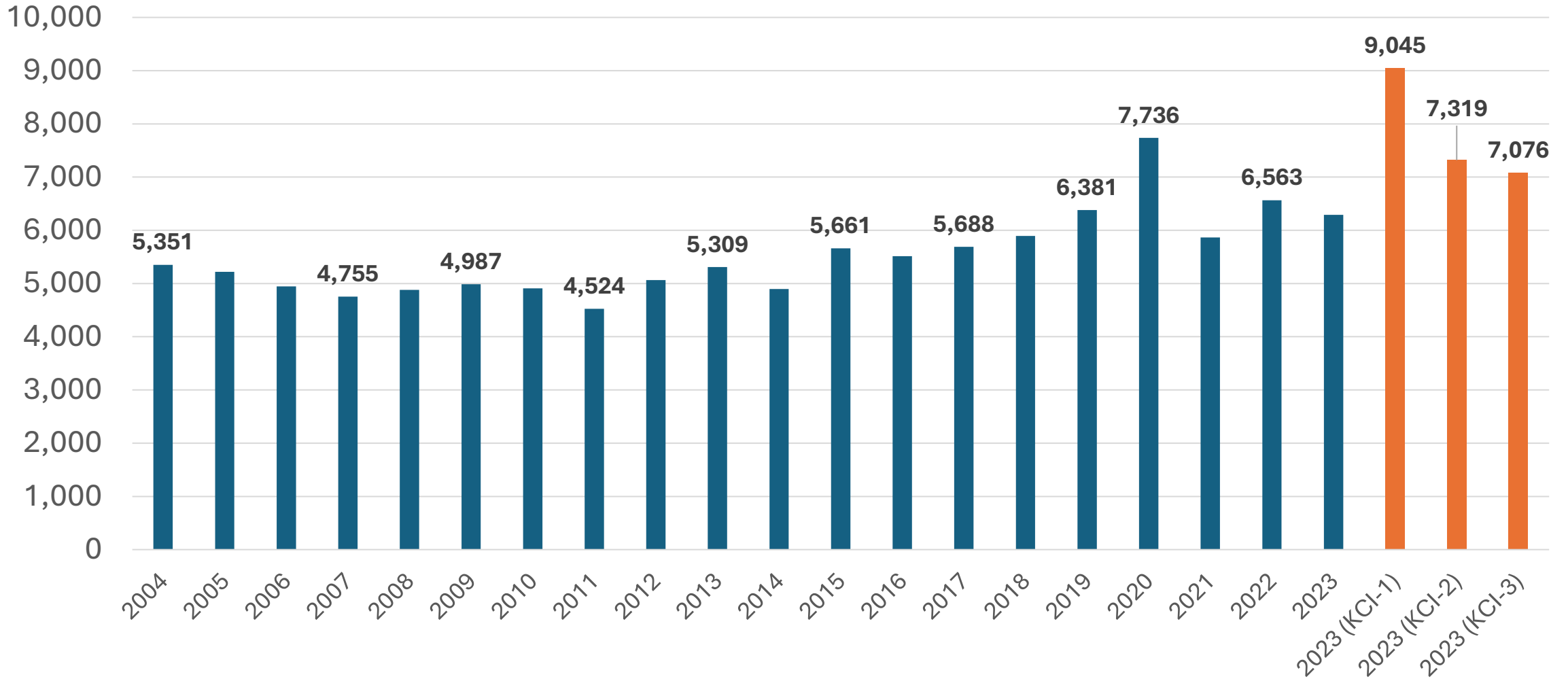
Traffic Data Collection Overview:

- Daily volumes, speeds, and vehicle classifications were collected at the tube collection sites throughout the study area
- Most counts were collected on an average Thursday and Saturday in May 2023
- All data were collected on days that schools were in session



ANNUAL AVERAGE DAILY TRAFFIC (AADT)

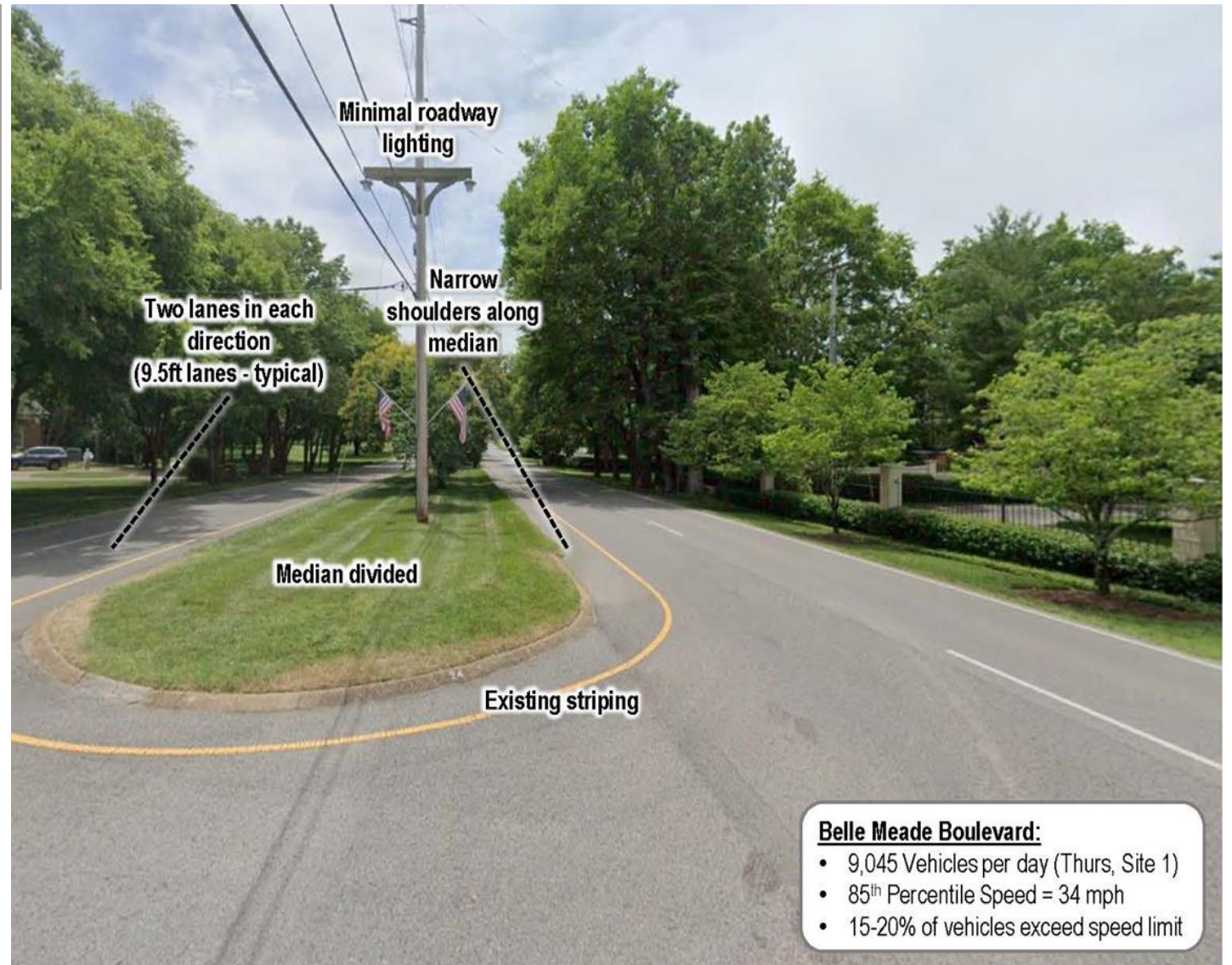
source: TDOT and KCI traffic study



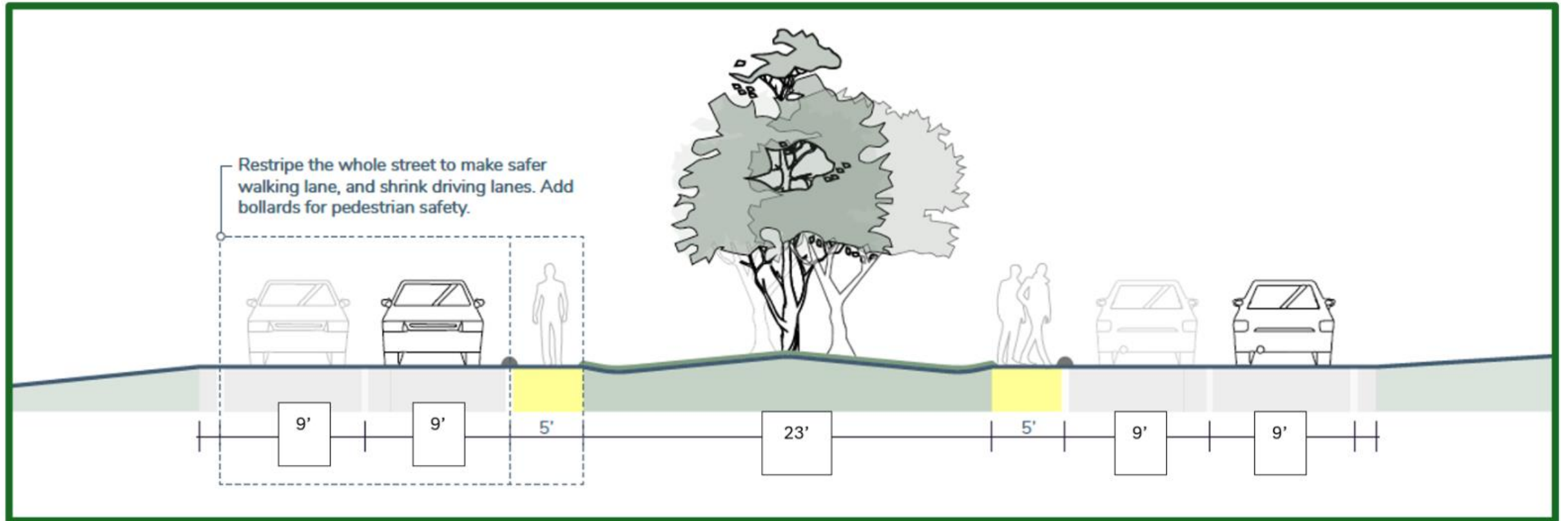
Existing Conditions

Characteristics:

- No dedicated walkways
- Walkers/Runners use inside shoulders
- Walking space varies
- Lane widths vary



Belle Meade Boulevard Project Concept:



<https://citybellemeade.org/capital-projects/>

