

Annual Report 2019



BELLE MEADE POLICE DEPARTMENT

4705 Harding Road Nashville, Tennessee 37205

615-297-0241 • 615-297-0044 fax

www.citybellemeade.org/police-department



Table of Contents

Mission Statement	1
Message from the Chief	2
Department Administration	3
Police Operations Section	4
Patrol Division	4
Criminal Investigation Division	5
Support Services Section	5
Communications Division	5
Calls for Service	6
Administrative Division	6
Organizational Chart.....	8
Municipal Court.....	9
Citations	9
Community Outreach	10
City Administration	12
Crime Statistics.....	13
Traffic Crashes	16

To save on printing costs, this report is provided in electronic format rather than the traditional printed format. Copies are available for download on the Belle Meade Police Department website at <http://www.citybellemeade.org/policedepartment>. Hard copies are available upon request.

Mission Statement

The City of Belle Meade Police Department strives to provide community-oriented law enforcement that contributes to the quality of life expected by City residents through professional, visible, and respectful efforts of well-trained Police Department employees who are dedicated to public service. In carrying out its mission, the Police Department is especially mindful of and guided by the following values:

Fairness – Consistent and equitable enforcement of the law.

Integrity – Adherence to the highest moral and ethical standards.

Respect – Respect for the views, rights, and dignity of others.

Teamwork – Working together to accomplish our mission with efficiency and safety.

Message from the Chief

To the Mayor, Commissioners, City Manager, and Citizens of Belle Meade, and the Employees of the Belle Meade Police Department:

This report highlights the many activities of the Belle Meade Police Department during 2019, as well as crime and traffic statistics. Hopefully it will provide a clear understanding of our department's activity and community involvement. Our Public Safety Security System began in July of 2018 and continues to be an asset for our patrol officers and Detective. We also use the system to search for persons that may be involved in crime in Belle Meade, and it is beneficial to other agencies investigations also. Our Community Outreach programs continue to thrive. Neighborhood Watch continues to have good participation. Our Drug Take Back Box averages about 30 pounds of prescription drugs disposed of each month. Certified Child Safety Technicians continue to help parents and caretakers with the correct installation of car seats. We became state accredited by the Tennessee Chief's Association in August of 2019. The Department continues to maintain a good working relationship with the Metro Nashville Police Department, the District Attorney's Office, the Tennessee Bureau of Investigation, the Tennessee Highway Safety Office and a multitude of other Federal, State and Local Law Enforcement Agencies in the Mid-State area. I continue to be grateful for the opportunity to serve with the group of dedicated professionals, our City Administration, other departments of the city and our Belle Meade Commissioners. I look forward to another great and safe year in 2020. I hope this information has been helpful.

Tim Eads

Chief

Department Administration

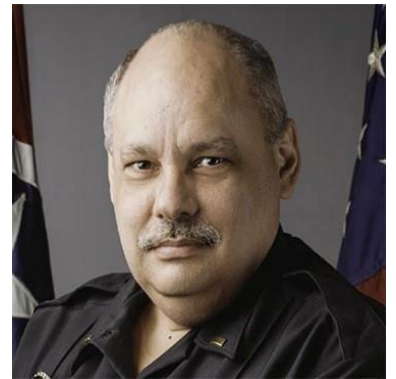
Chief of Police Timothy Eads



Chief Timothy Eads was appointed to the office of Chief of Police in September of 2006. Prior to his service with Belle Meade, he was employed by the Dickson County Sheriff's Office for 18 years. Chief Eads is a member of the Tennessee Association of Chiefs of Police, where he serves on the Professional Standards Committee. He is also a graduate of the FBI National Academy.

Lieutenant Vince Higgins

Lt. Vince Higgins has served with the Belle Meade Police Department for 30 years. He has worked his way up from a patrol officer to his current position as second in command of the department since 2007. He has also served with the Nashville International Airport Police and the Metro Nashville Park Police as a police officer. Lt. Higgins is a graduate of the Tennessee Law Enforcement Executive Development Seminar as well as numerous other police leadership courses.



Police Operations Section

The Police Operations Section is the largest component of the Police Department. It is comprised of the Patrol Division and the Criminal Investigation Division. The Police Operations Sections is under the direct supervision of Lieutenant Higgins.

Patrol Division

The uniformed officers of the Patrol Division are the most visible members of the department. Officers are assigned marked patrol cars which are all equipped with radar, as well as in-car video cameras.



The Patrol Division consists of 12 sworn officers, who are assigned to four separate shifts. Each shift is made up of a Sergeant and 2 officers.

Patrol Supervisors



Sergeant Jon Carter
A-Shift (6 am to 6 pm)



Sergeant Chuck Williams
C-Shift (6 am to 6 pm)



Sergeant Chris Roark
B-Shift (6 pm to 6 am)

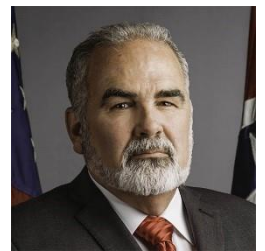


Sergeant Mack Mangrum
D-Shift (6 pm to 6 am)

All members of the Patrol Division bring years of experience to the department. In addition to their patrol duties, many of the officers have other duties, such as serving as Field Training Officers, instructors in various disciplines, and members of the bike patrol.

Criminal Investigation Division

The Criminal Investigation Division is staffed by Detective Tom Sexton. Detective Sexton also provides crime prevention services to the residents of Belle Meade. In addition, the department can call on the resources of the Metro Nashville Police Department as needed to assist in any investigation.



Support Services Section

The Support Services Section is made up of the Communications Division and the Administrative Division. The Support Services Section is under the direct supervision of Lieutenant Higgins.

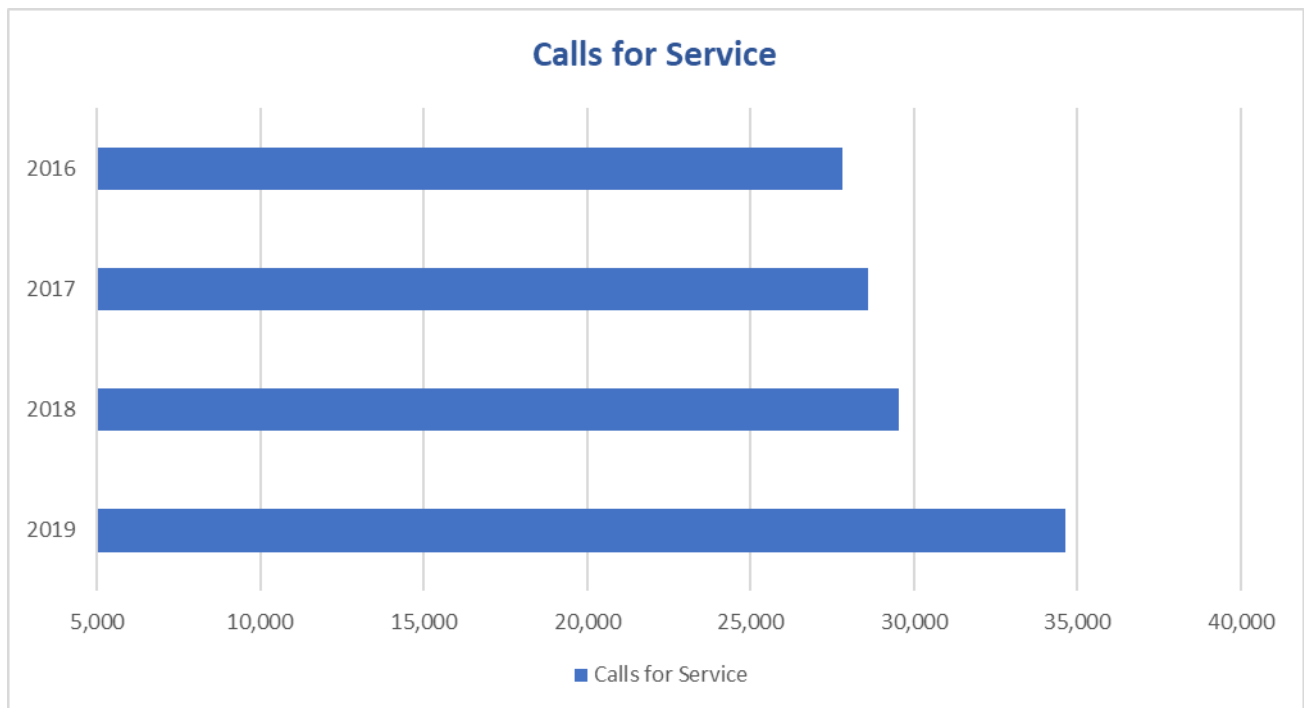
Communications Division

The Communications Division is staffed by 4 full time and 2 part time Communications Officers. Each Communications Officer is certified by the Tennessee Bureau of Investigation and the Federal Bureau of Investigation, and has access to both the Tennessee Criminal Portal and the NCIC system. Communications Officers provide a link between callers and officers in the field. One Communications Officer is assigned to each of the four patrol shifts. This division is supervised by Communications Sergeant Toni Tomlin.



Calls for Service

Belle Meade officers responded to 34,641 calls (this includes all activity) for service in 2019. This was a 15.86% increase over calls in 2018.



Administrative Division

The Administrative Division consists of the Training Unit, the Accreditation Unit, the Records Unit, and the Firearms Training Unit. Except for the Records Unit, all other units are staffed by patrol officers as an additional duty.

Training Unit - The Training Unit is staffed by the General Departmental Instructor (GDI), is responsible for ensuring all sworn personnel completed the annual training requirements as set by the Tennessee POST Commission. Sergeant Chuck Williams currently serves as the GDI.

Accreditation Unit – The Accreditation Unit is staffed by the Accreditation Manager, who is responsible for the Accreditation process. The department is currently going through the Tennessee Law Enforcement Accreditation program, which is administered by the Tennessee Association of Chiefs of Police. Sergeant Jon Carter currently serves as the Accreditation Manager.

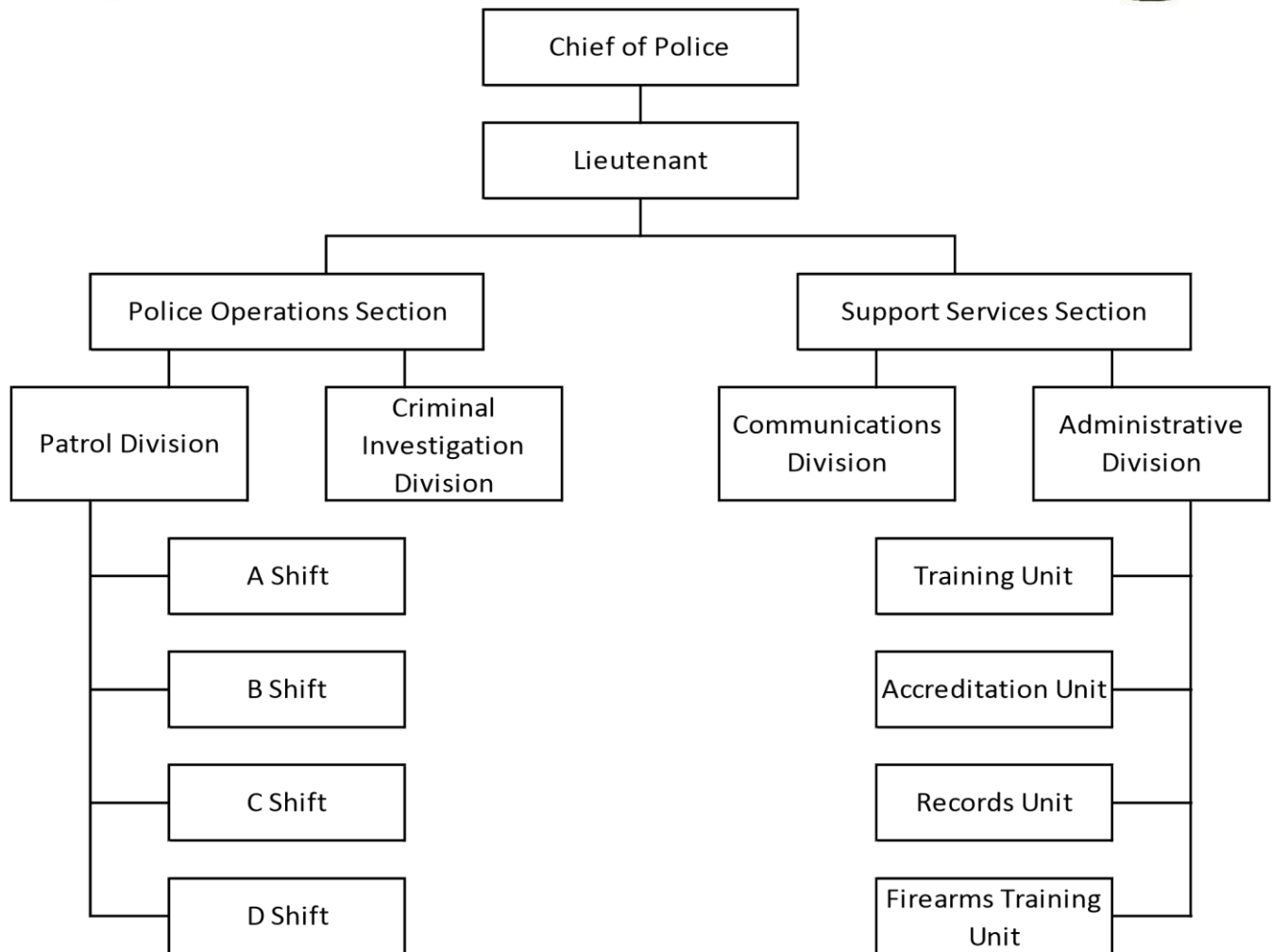
Records Unit – The Records Unit function is covered by the Court Clerk as part of her duties. In this function, the Court Clerk is responsible for ensuring all records, reports, etc. are maintained in accordance with departmental policy and Tennessee state law.

Firearms Training Unit – The Firearms Training Unit is responsible for all firearms training and maintenance of all firearms issued by the department. This unit is under the supervision of Sergeant Chuck Williams.

Organizational Chart



Belle Meade Police Department Organizational Chart



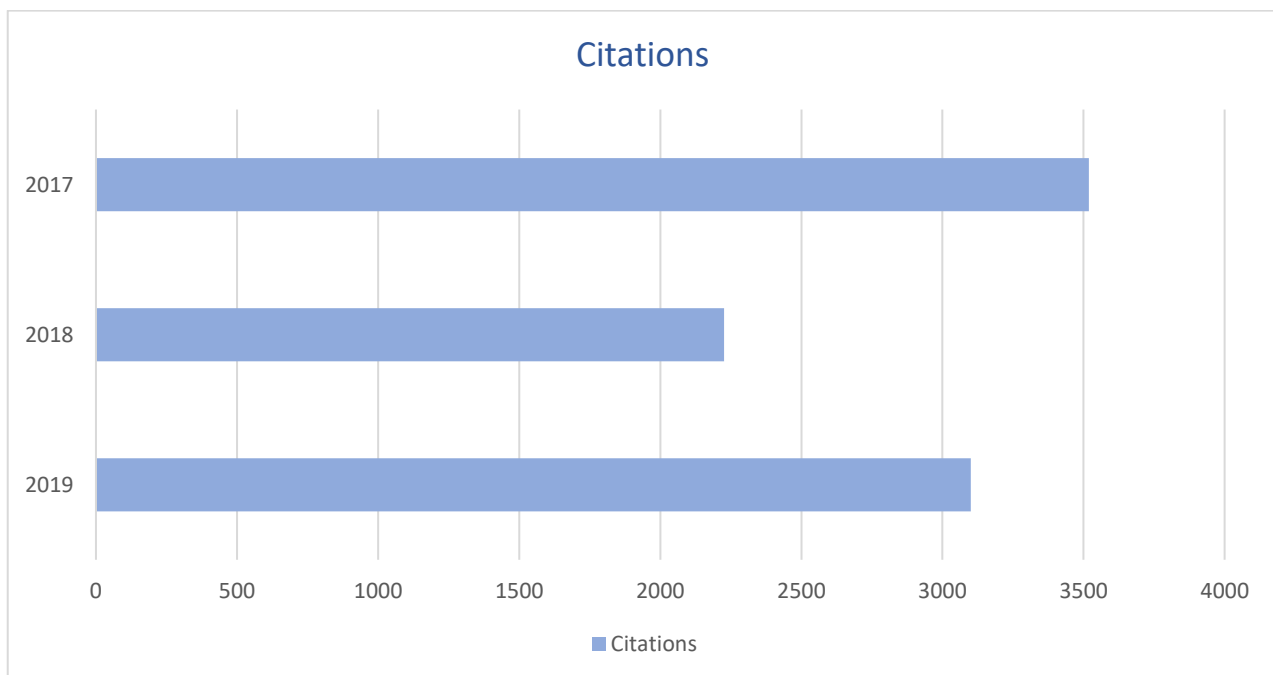
Municipal Court

The City Court of Belle Meade is presided over by Judge Mark Beveridge. The City Court hears cases concerning traffic violations and violations of other Belle Meade ordinances committed within the City of Belle Meade. Court is held on Wednesday and Thursday once a month at 8:30 AM. The City Court Clerk is responsible for administrative responsibilities concerning the operation of the Belle Meade City Court. Judge Beveridge can be contacted through her office at 615-298-1223. Kim Huffines serves as the Court Clerk.



Traffic Citations

Belle Meade officers issue citations into City Court for violations of Belle Meade ordinances. These citations are primarily for traffic violations, but other violations, such as curfew, may be included in these numbers. In 2019 there were 3,101 violations written.



Community Outreach

The Belle Meade Police Department provides more than just law enforcement services. The department also offers several Community Outreach programs to better serve our community.

Child Passenger Safety Program (CPSP) - Certified child passenger safety technicians are available to give personal instruction on how to correctly install child restraint equipment in vehicles. They can also answer questions concerning the safety of your child while riding in a vehicle. Officer Keith Samol serves as the CPSP Coordinator.



Neighborhood Watch - The city offers an on-site coordinator and liaison for neighborhood watch groups in Belle Meade. The coordinator communicates with Block Captains who send information to residents in their group regarding BOLOs (Be on the Look Out) and about recent crimes in the city, as well as surrounding areas. The department is grateful for the extremely high participation rate in this program. Officer Dee Howell serves as the Neighborhood Watch Coordinator.

Prescription Drug Collection Program - The prescription drug collection program offers the public a means to dispose of their expired, unused, or unwanted prescription drugs anonymously and safely. The collection box is in the lobby of the Belle Meade Police Department at 4705 Harding Pike. (Entrance is located to the right of the city hall main entrance). It is available 24 hours a day, 7 days a week.

Participants may dispose of medication in its original container. Loose pills should be disposed of using a clear plastic bag (provided). All the medications collected from this program are destroyed by incineration. Sergeant Jon Carter supervises this program.



City Administration

The City of Belle Meade is in western Davidson County and is considered a “satellite city” of the Metropolitan Government of Nashville and Davidson County. The population of Belle Meade is currently 2,704 according to the U.S. Census estimate. The city was chartered in 1938 as a City Manager-Commissioner form of government. The Board of Commissioners is the policy making body, while the City Manager is the Chief Administrative Officer. Beth Reardon serves as the City Manager. The citizens elect five Commissioners for staggered four-year terms. The Commissioners then elect two of their members to serve as Mayor and Vice-Mayor for two-year terms.

2019 Board of Commissioners:

Mayor: James V. Hunt

Vice-Mayor: Louise Bryan

Commissioner: Cathy Altenbern

Commissioner: Bob Weigel

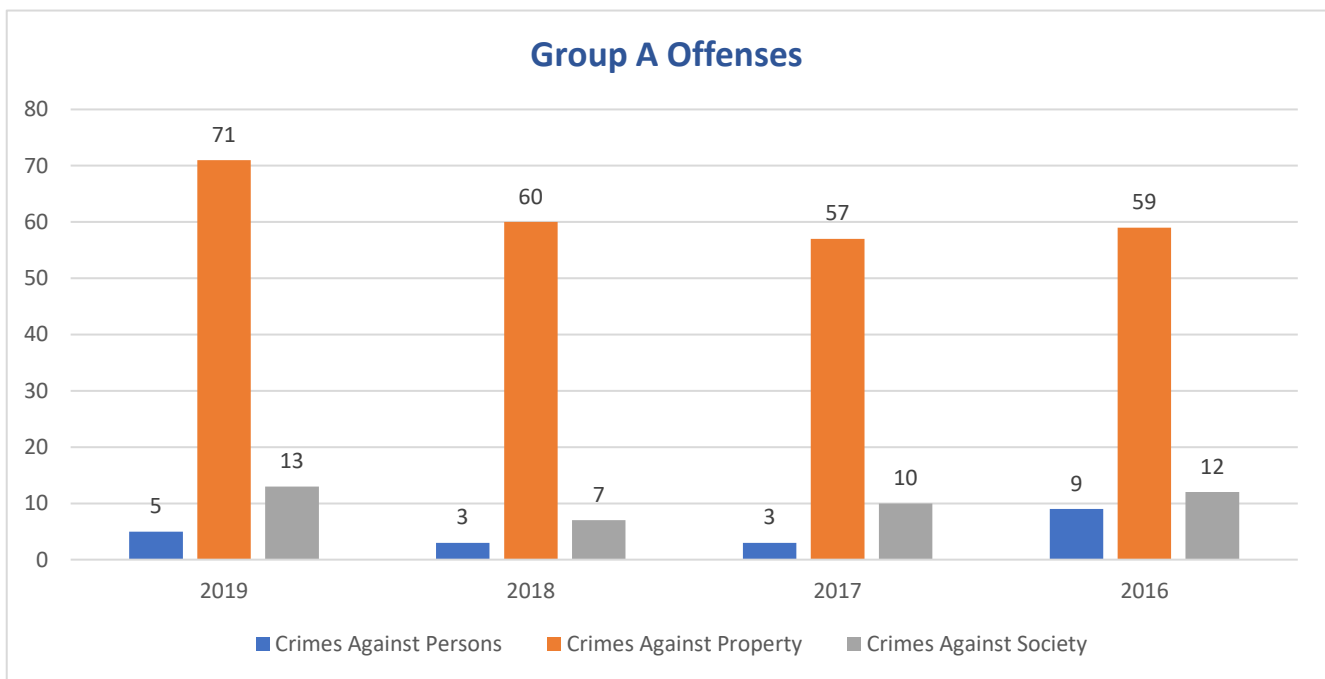
Commissioner: Rusty Moore



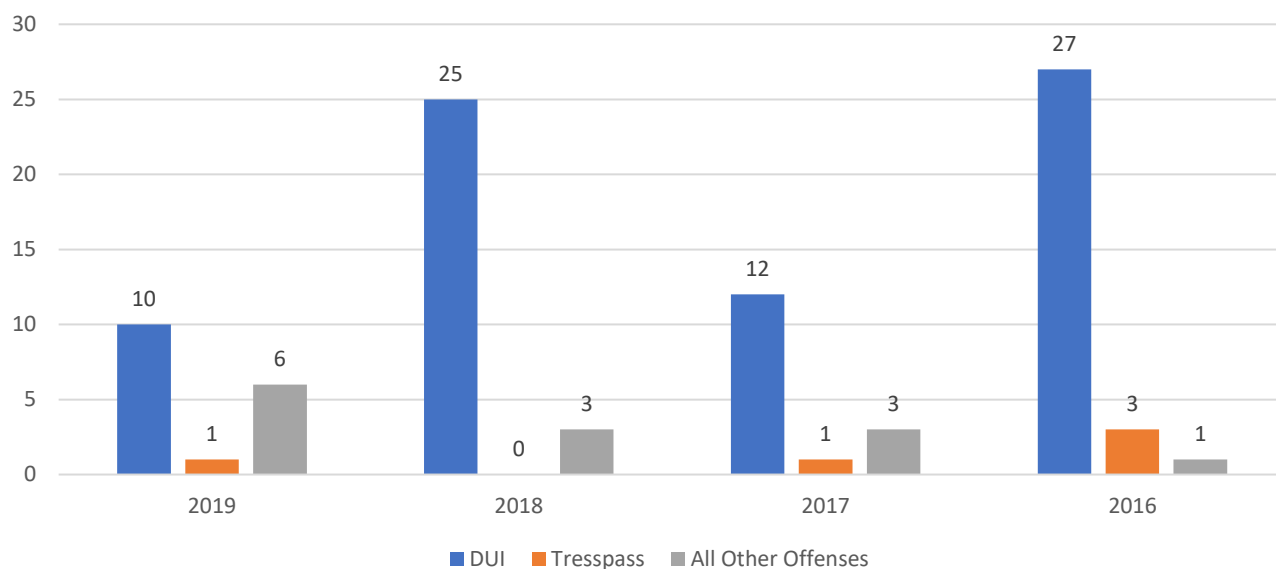
Crime Statistics

The Tennessee Bureau of Investigation (TBI) is responsible for compiling crime statistics for the State. Crimes are placed into one of two groups. Group A includes crimes such as murder, rape, and theft. Group B includes DUI, drunkenness, and trespass.

Most crimes in Belle Meade are property crimes, which fall in Group A.



Group B Offenses



TBI Crime Overview

GROUP A OFFENSES				
Crimes Against Persons	2019	2018	2017	2016
Murder	0	0	0	0
Kidnapping	0	0	0	0
Forcible Rape	0	0	0	0
Aggravated Assault	0	1	0	0
Simple Assault	0	1	1	8
Intimidation	0	1	2	1
Stalking	0	0	0	0

Crimes Against Property	2019	2018	2017	2016
Arson	0	0	0	0
Burglary	5	3	4	6
Counterfeiting/Forgery	3	2	1	0
Destruction/Damage/Vandalism	14	7	11	12
Extortion/Blackmail	0	2	1	0
Fraud-False Pretenses	0	12	2	3
Fraud- Credit Card/ATM	3	8	7	2
Fraud-Impersonation	1	1	1	5
Fraud-Identity Theft	2	0	2	4
Robbery	0	0	0	0
Theft From Building	2	4	6	1
Theft From Motor Vehicle	8	9	15	13
Theft of Motor Vehicle Parts	3	2	3	1
Theft-All Other Larceny	8	5	0	9
Motor Vehicle Theft	2	2	2	0
Crimes Against Society	2019	2018	2017	2016
Drug/Narcotic Violations	9	4	5	7
Drug/Narcotic Equipment Violations	4	3	4	4
Weapons Law Violation	0	0	1	0

GROUP B OFFENSES				
Offense	2019	2018	2017	2016
DUI	10	25	32	27
Drunkenness	1	0	1	2
Trespass	1	0	1	3
All Other Offenses	6	3	3	1

Traffic Crashes

