



ANNUAL REPORT 2018

Belle Meade Police Department

4705 Harding Road
Nashville, TN 37205

Tel: 615-297-0241
www.citybellemeade.org

In order to save on printing costs, this report is provided in electronic format rather than the traditional printed format. Copies are available for download on the Belle Meade Police Department website at <http://www.citybellemeade.org/police-department>. Hard copies are available upon request.

TABLE OF CONTENTS

Mission Statement _____	4
Message from the Chief _____	5
Department Administration _____	7
Organizational Chart _____	8
Police Operations Section _____	9
Support Services Section _____	12
City Court _____	14
Public Safety Security System _____	15
Community Outreach _____	16
City Administration _____	17
Crime Statistics _____	18
Traffic Crashes _____	20

MISSION STATEMENT

MISSION STATEMENT

The mission of the Belle Meade Police Department is to maintain a safe and secure community for our residents and visitors by providing extraordinary law enforcement services.

VISION

Through community partnerships and professional law enforcement provided by dedicated, well-trained officers, the Belle Meade Police Department strives to make our community the safest city in Tennessee.

VALUES

Fairness – Consistent and equitable enforcement of the law.

Integrity – Adherence to the highest moral and ethical standards.

Respect – Respect for the views, rights, and dignity of others.

Service – Addressing the needs and concerns of our community.

Teamwork – Working together to accomplish our mission with efficiency and safety.

MESSAGE FROM THE CHIEF

To the Mayor, Commissioners, City Manager, and Citizens of Belle Meade, and the Employees of the Belle Meade Police Department:

This report highlights the many activities of the Belle Meade Police Department during 2018, as well as crime and traffic statistics. Hopefully it will provide a clear understanding of our department and the challenges we face.

2018 showed an increase for a number of events recorded in our Records Management System. We were up 854 events from 2017's 28,584 to 29,438 for 2018. Events are all calls and activities for patrol officers. This includes duties such as House Check Services, radar patrols, traffic crashes and calls for service.

Overall crime in Belle Meade continues to remain very low. There was only one aggravated assault reported. Total arrests were down 23%, with no juveniles arrests. DUI arrests were down 21.88%. Last year there were 4 burglaries reported, this year we had 3, for a 25% decrease. There were 9 vehicle burglaries reported, which is down 40%. The only significant increase was Extortion/Blackmail with 12 attempted case reported, up from 1 last year. We believe this is due to our efforts to have the public report the Bitcoin scam.

Traffic crashes were up slightly from 101 crashes in 2017 to 104 crashes in 2018. In addition, there was one fatality on Harding Road which was investigated by the Metro Nashville Police Department Fatal Team, and was not included in our crash stats. There were 21 crashes with reported injuries down 1 from last year and 83 property damage up 4 from last year.

Installation of our Public Safety Security System began in July of 2018. A total of 19 sites were installed around the major entry and exit roadways in Belle Meade. In November of 2018 we went live with automated updates from the National Crime Information Center. NCIC provides us with data to identify stolen vehicles, stolen tags, Amber and Silver Alerts, wanted and missing persons and other identifiers such as terrorist watch lists. We can also use the system to search for persons that may be involved in a crime in Belle Meade. From November 1st, 2018 to May 5th, 2019 there were 83 stolen plate hits, 24 stolen vehicle hits and 1 missing person hit. We were able to make contact with the missing person and determine she was alright. We have recovered several tags and a few of the stolen vehicles. We have also been able to use the system to help three mid-state police agencies solve several major crimes.

Our Community Outreach programs continue to thrive. Neighborhood Watch continues to have good participation. Our Drug Take Back Box averages about 30 pounds of prescription drugs disposed of each month. Certified Child Safety Technicians average about 7.5 people a month that take advantage of our Child Safety Seat Program.

We enrolled in the Tennessee Chief's Association State Accreditation Program and are very close to becoming a State Accredited agency by August of 2019.

The Department continues to maintain a good working relationship with the Metro Nashville Police Department, the District Attorney's Office, the Tennessee Bureau of Investigation, the

Tennessee Highway Safety Office and a multitude of other Federal, State and Local Law Enforcement Agencies in the Mid-State area.

I continue to be grateful for the opportunity to serve with the group of dedicated professionals, our City Administration, other departments of the City and our Belle Meade Commissioners. I look forward to another great and safe year in 2019. I hope this information has been helpful.

A handwritten signature in black ink, appearing to read "Tim Eads", enclosed in a thin black rectangular border.

Chief Tim Eads

DEPARTMENT ADMINISTRATION

Chief of Police Timothy Eads



Chief Timothy Eads was appointed to the office of Chief of Police in September of 2006. Prior to his service with the City of Belle Meade, he was employed by the Dickson County Sheriff's Office for 18 years where he served in several leadership positions, including Chief Deputy. Chief Eads is a member of the Tennessee Association of Chiefs of Police, where he serves on the Professional Standards Committee. He is also a graduate of the FBI National Academy, 219th Session.

Lieutenant Vince Higgins

Lt. Vince Higgins has served with the Belle Meade Police Department for 26 years. He has worked his way up from a patrol officer to his current position as second in command of the department. He has also served with the Nashville International Airport Public Safety Department and the Metro Nashville Park Police as a police officer. Lt. Higgins is a graduate of the Tennessee Law Enforcement Executive Development Seminar.

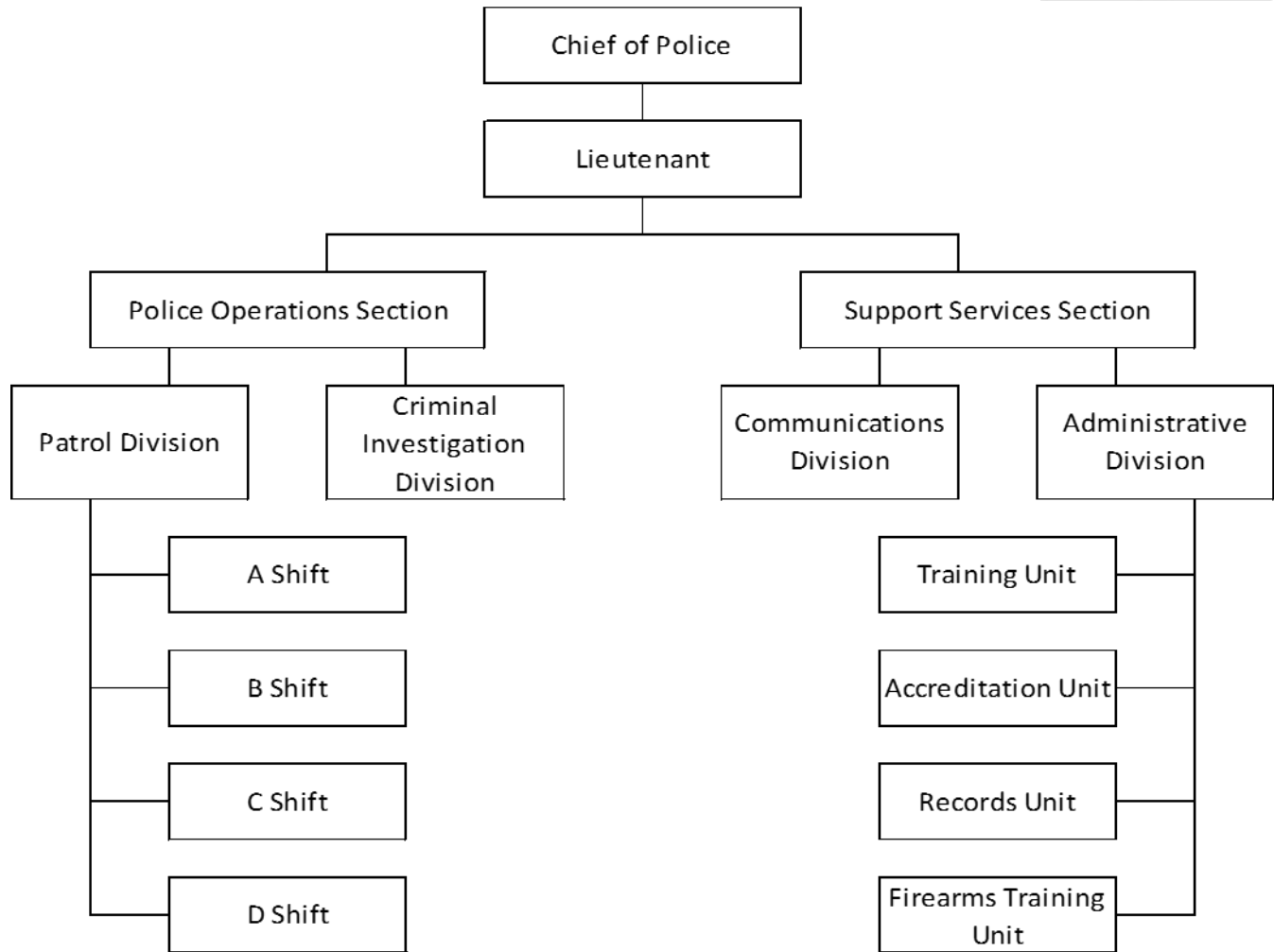


ORGANIZATIONAL CHART



Belle Meade Police Department

Organizational Chart



POLICE OPERATIONS SECTION

The Police Operations Section is the largest component of the Police Department. It is comprised of the Patrol Division and the Criminal Investigation Division. The Police Operations Section is under the direct supervision of Lieutenant Higgins.

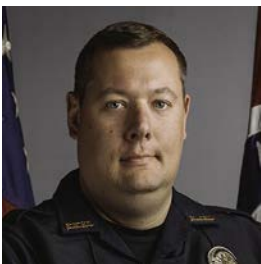
Patrol Division

The uniformed officers of the Patrol Division are the most visible members of the department. Officers are assigned marked patrol cars which are all equipped with radar and in-car video cameras. All sworn personnel are permitted to drive their patrol cars home, which enables a greater response in the event of natural or man-made disasters.

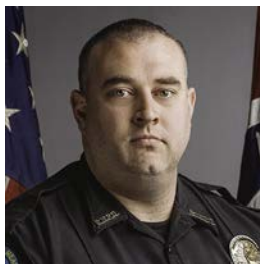


The Patrol Division is made up of 12 sworn officers. These officers are assigned to four shifts consisting of a sergeant and two officers. Patrol works on a 12 hour schedule, with two shifts assigned to day shift, 6 am to 6 pm, and two shifts assigned to night shift, 6 pm to 6 am.

A-Shift (6 am to 6 pm)



Sgt. J. Carter



MPO D. Wright



Ofc. K. Cloxton

B-Shift (6 pm to 6 am)

Sgt. C. Roark



Ofc. M. Hill



Ofc. T. Parrish

C-Shift (6 am to 6 pm)

Sgt. C. Williams



MPO K. Samol



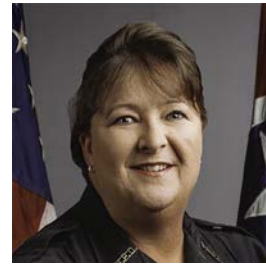
Ofc. W. Bowker

D-Shift (6 pm to 6 am)

Sgt. M. Mangrum



MPO D. Corter



MPO D. Howell

All members of the Patrol Division bring years of experience to the department. In addition to their patrol duties, many of the officers have other duties, such as serving as Field Training Officers, instructors in various disciplines, and members of the bike patrol.

Criminal Investigation Division

The Criminal Investigation Division is staffed by Detective Tom Sexton. He is available 24 hours a day, 7 days a week to assist officers or citizens as needed. Detective Sexton also provides crime prevention services to the residents of Belle Meade. In addition, the department is able to call on the resources of the Metro Nashville Police Department as needed to assist in any investigations. Detective Sexton can be contacted by phone at 615-297-0241 or by email at tsexton@citybellemeade.org.



SUPPORT SERVICES SECTION

The Support Services Section is made up of the Communications Division and the Administrative Division. The Support Services Section is under the direct supervision of Lieutenant Higgins.

Communications Division

The Communications Division is staffed by 4 full time and 2 part time Communications Officers. Each Communications Officer is certified by the Tennessee Bureau of Investigation and the Federal Bureau of Investigation, and has access to both the Tennessee Criminal Portal and the NCIC system.

Communications Officers provide a link between callers and officers in the field. One Communications Officer is assigned to each of the four patrol shifts. This division is supervised by Communications Sergeant Toni Tomlin.



The Communications Center was renovated in 2018, and now includes the capability to receive alerts from the Public Safety Security System that went online in 2018.

Calls for Service

Belle Meade officers responded to 29549 calls for service in 2018. This was a 3.38% increase over calls received in 2017.



Administrative Division

The Administrative Division consists of the Training Unit, the Accreditation Unit, the Records Unit and the Firearms Training Unit. With the exception of the Records Unit, all other units are staffed by patrol officers as an additional duty.

Training Unit - The Training Unit is staffed by the General Departmental Instructor (GDI), and is responsible for insuring all sworn personnel completed the annual training requirements as set by the Tennessee POST Commission. Sergeant Chuck Williams currently serves as the GDI.

Accreditation Unit - The Accreditation Unit is staffed by the Accreditation Manager, and is responsible for the Accreditation process. The department is currently going through the Tennessee Law Enforcement Accreditation program, which is administered by the Tennessee Association of Chiefs of Police. The department anticipates receiving its first award in May of 2019. Sergeant Jon Carter currently serves as the Accreditation Manager.

Records Unit - The Records Unit function is covered by the Court Clerk as part of her duties. In this function, the Court Clerk is responsible for insuring all records, reports, etc. are maintained in accordance with departmental policy and Tennessee state law.

Firearms Training Unit - The Firearms Training Unit is responsible for all firearms training and maintenance of all firearms issued by the department. This unit is under the supervision of Sergeant Williams.

CITY COURT

The City Court of Belle Meade is presided over by Judge Mark Beveridge. The City Court hears cases concerning traffic violations and violations of other Belle Meade ordinances committed within the City of Belle Meade. Court is held on Wednesday and Thursday once a month at 8:30 AM.

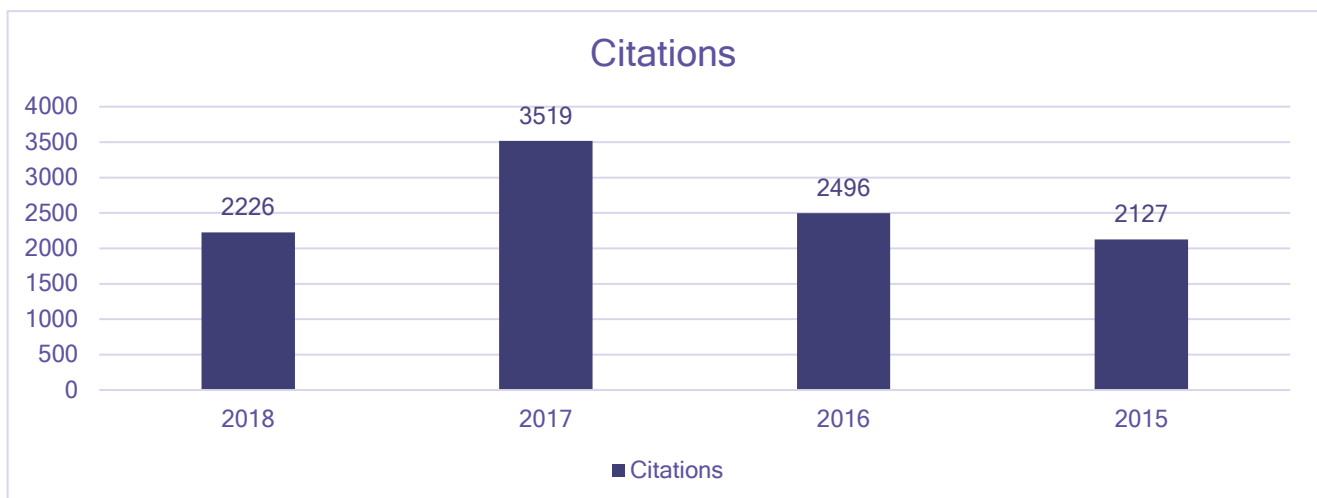
Kim Huffines serves as the Court Clerk, and is responsible for administrative duties concerning the operation of the Belle Meade City Court. Judge Beveridge can be contacted through her office. The phone number is 615-298-1223, and her email is khuffines@citybellemeade.org.



Kim Huffines

Citations

Belle Meade officers issue citations into City Court for violations of Belle Meade ordinances. These citations are primarily for traffic violations, but other violations, such as curfew, may be included in these numbers. 2018 saw a 36.74% decrease in the number of citations issued over 2017.



PUBLIC SAFETY SECURITY SYSTEM

In 2018, the City brought the Public Safety Security System online. This system consists of 20 sites at key entry points into the City. Each site has cameras and License Plate Readers (LPR) covering the roads. This system has been instrumental in identifying and tracking suspects in crimes both from within the City and the surrounding areas. The cameras have also provided valuable information in traffic crash investigations. The system does not have the capability to monitor speeds or issue traffic citations. This system is administered by Det. Thomas Sexton.



COMMUNITY OUTREACH

The Belle Meade Police Department provides more than just law enforcement services. The department also offers several Community Outreach programs to better serve our community.

Child Passenger Safety Program (CPSP) - Certified child passenger safety technicians are available to give personal instruction on how to correctly install child restraint equipment in vehicles. They can also answer questions concerning the safety of your child while riding in a vehicle. MPO Keith Samol serves as the CPSP Coordinator. He can be contacted by phone at 615-297-0241 or by email at ksamol@citybellemeade.org.



Neighborhood Watch - The city offers an on-site coordinator and liaison for neighborhood watch groups in Belle Meade. The coordinator communicates with Block Captains who send information to residents in their group regarding BOLOs (Be On the Look Out) and about recent crimes in the City, as well as surrounding areas. The department is grateful for the extremely high participation rate in this program. MPO Dee Howell serves as the Neighborhood Watch Coordinator. She can be contacted by phone at 615-297-0241 or by email at dhowell@citybellemeade.org.

Prescription Drug Collection Program - The prescription drug collection program offers the public a means to anonymously and safely dispose of their expired, unused or unwanted prescription drugs. The collection box is located in the lobby of the Belle Meade Police Department at 4705 Harding Pike. (Entrance is located to the right of city hall main entrance). It is available 24 hours a day, 7 days a week.

Citizens may dispose of medication in its original container. All of the medications collected from this program are destroyed by incineration. Sergeant Jon Carter supervises this program and can be contacted by phone at 615-297-0241 or by email at jcarter@citybellemeade.org.



CITY ADMINISTRATION

The City of Belle Meade is located in western Davidson County, and is considered a “satellite city” of the Metropolitan Government of Nashville and Davidson County. The population of Belle Meade is 2,704 according to the 2016 U.S. Census estimate.

The City was chartered in 1938 as a City Manager-Commissioner form of government. The Board of Commissioners is the policy making body, while the City Manager is the Chief Administrative Officer. Beth Reardon serves as the City Manager, and Aspen Collins serves as the Assistant City Manager/Finance Director.



Beth Reardon



Aspen Collins

The citizens elect five Commissioners for staggered four-year terms. The Commissioners then elect two of their members to serve as Mayor and Vice-Mayor for two-year terms.

2017-18 Board of Commissioners:

Mayor: James V. Hunt

Vice-Mayor: Bob Weigel

Commissioner: Cathy Altenbern

Commissioner: Boyd Bogle (deceased 2018)

Commissioner: Gray O. Thornburg

Commissioner: Blair Wilson (appointed to serve remainder of Commissioner Bogle’s term)

2018-19 Board of Commissioners:

Mayor: James V. Hunt

Vice-Mayor: Louise Bryan

Commissioner: Cathy Altenbern

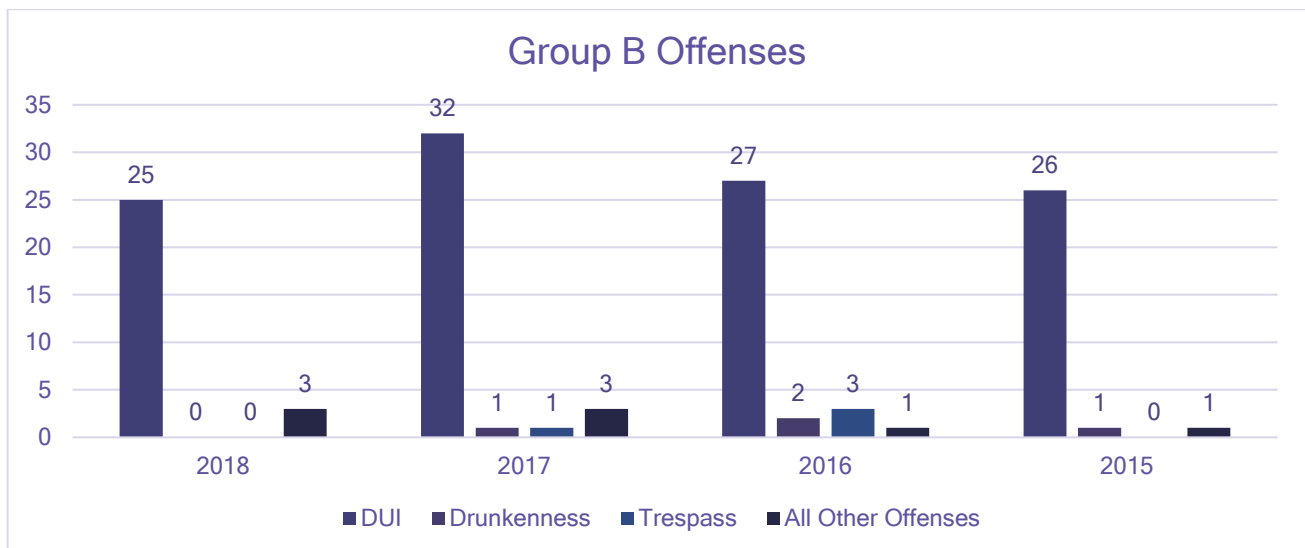
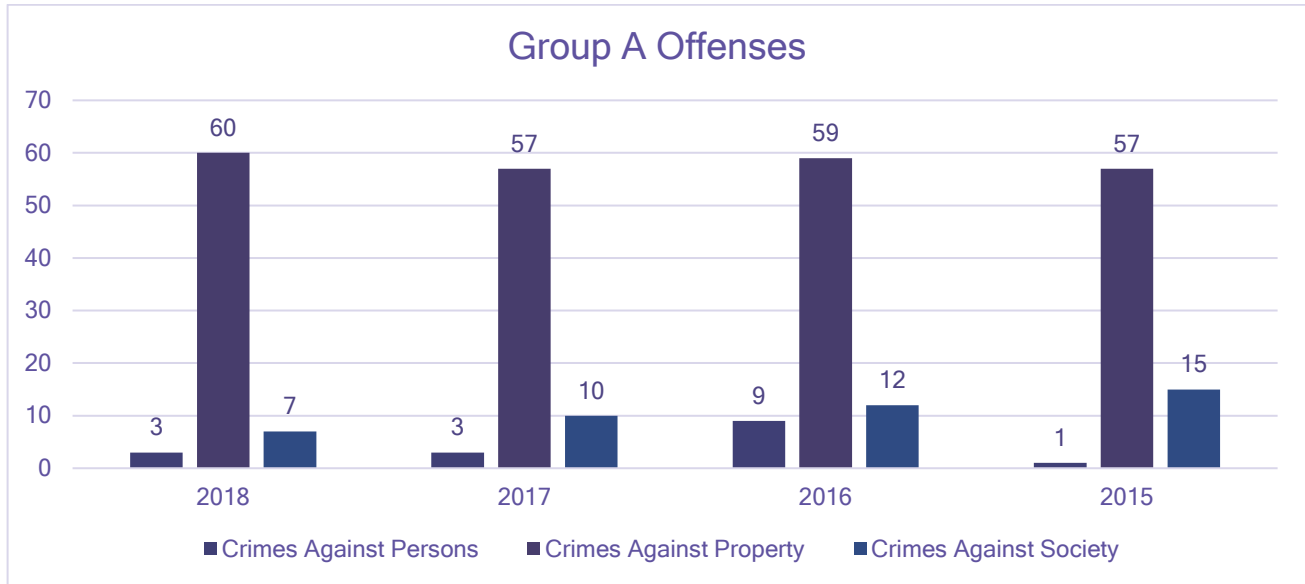
Commissioner: Rusty Moore

Commissioner: Bob Weigel

CRIME STATISTICS

The Tennessee Bureau of Investigation (TBI) is responsible for compiling crime statistics for the State. Crimes are placed into one of two groups. Group A includes crimes such as murder, rape, and theft. Group B includes DUI, drunkenness and trespass.

The majority of crimes in Belle Meade are property crimes, which fall in Group A.



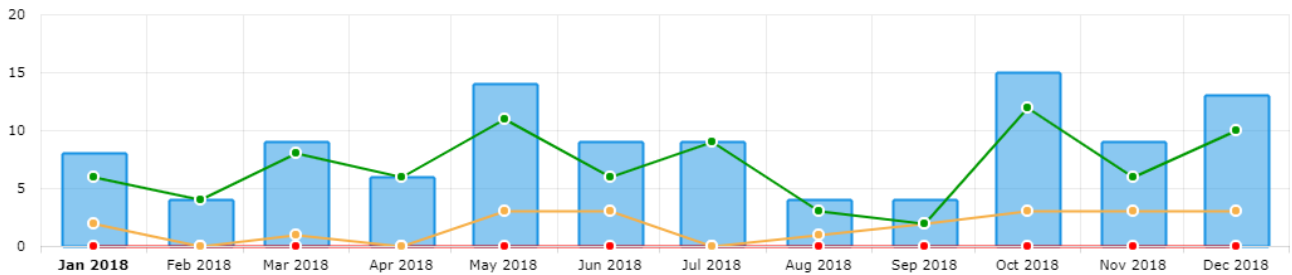
TBI Crime Overview

GROUP A OFFENSES				
Crimes Against Persons	2018	2017	2016	2015
Murder	0	0	0	0
Kidnapping/Abduction	0	0	0	0
Forcible Rape	0	0	0	0
Aggravated Assault	1	0	0	0
Simple Assault	1	1	8	0
Intimidation	1	2	1	1
Stalking	0	0	0	0
Crimes Against Property	2018	2017	2016	2015
Arson	0	0	0	0
Burglary	3	4	6	15
Counterfeiting/Forgery	2	1	0	1
Destruction/Damage/Vandalism	7	11	12	11
Embezzlement	2			
Extortion/Blackmail	12	1	0	0
Fraud - False Pretenses	2	2	3	3
Fraud - Credit Card/ATM	8	7	2	5
Fraud - Impersonation	1	1	5	11
Fraud - Identity Theft	0	2	4	0
Robbery	0	0	0	0
Theft From Building	4	6	1	5
Theft From Motor Vehicle	9	15	13	10
Theft of Motor Vehicle Parts	2	3	1	0
Theft - All Other Larceny	5	0	9	8
Motor Vehicle Theft	2	2	0	1
Stolen Property Offences	1			
Crimes Against Society	2018	2017	2016	2015
Drug/Narcotic Violations	4	5	7	10
Drug/Narcotic Equipment Violations	3	4	4	4
Pornography/Obscene Material	0	0	1	1
Weapons Law Violations	0	1	0	0
GROUP B OFFENSES				
Offense	2018	2017	2016	2015
DUI	25	32	27	26
Drunkenness	0	1	2	1
Trespass	0	1	3	0
All Other Offenses	3	3	1	1

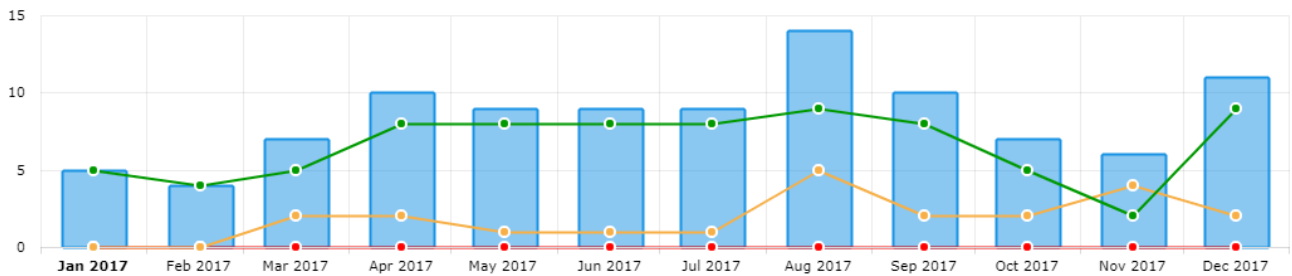
TRAFFIC CRASHES

In 2018, the Belle Meade Police Department investigated 104 total crashes. There were no fatality crashes, 21 crashes with injuries with 28 total injuries, and 83 property damage crashes. This is an increase of 2.97% in total crashes worked.

2018 Crashes



2017 Crashes



2016 Crashes

